

Abbott Panbio™ Test Kit

Self-Administered Rapid Testing for Employees


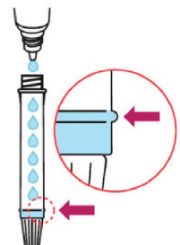


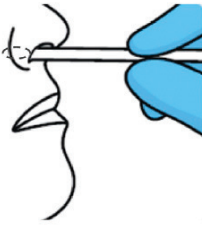
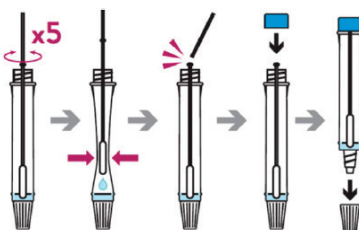
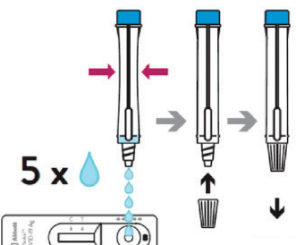
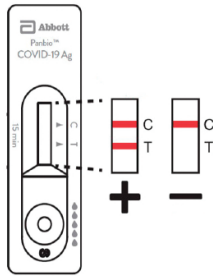
COVID-19 “How To” Guide for ASYMPTOMATIC Screening

Preparing for Rapid Testing

When preparing your testing station, it is recommended that you have the following on hand:

- Test Kit
- ABHR (alcohol based hand rub) or hand washing station – wash your hands before and after administering the test
- Paper towel and/or wipes. If self-administering the test in the workplace, clean and disinfect any surfaces that may be touched.
- Allow required wet contact time before placing items on surface
- Clock or timer to time the test
- Trash can for disposal – no special disposal bins are required
- Method for reporting results to your employer

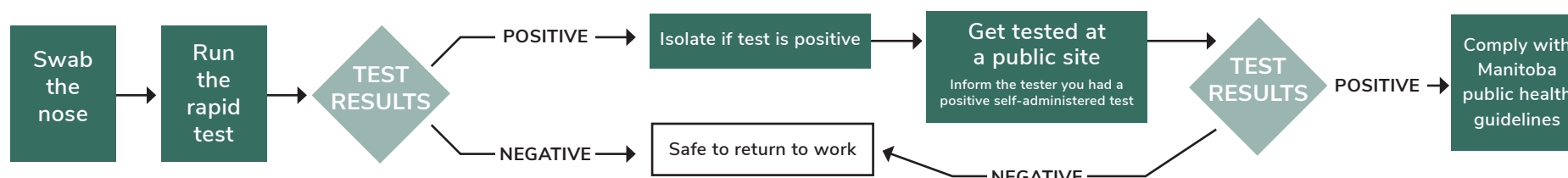
Conducting the Test with the Abbott Panbio

				
<p>Step 1 Perform hand hygiene.</p>	<p>Step 2 Put the buffer fluid in the tube to the marked line (300 µl).</p>	<p>Step 3 Place it in the tube rack. Perform hand hygiene.</p>	<p>Step 4 Remove mask/respirator. Perform HH. Start by blowing your nose or removing any mucous with a tissue or cotton tipped swab.</p>	<p>Step 5 Perform hand hygiene. Collect sample with one of the smaller nasal swabs. Insert one swab - the same swab - into each nostril about 2 cm deep. Gently rub and roll the swab 3-4 times then remove slowly.</p>
				
<p>Step 6 Swirl the swab stick in the buffer fluid, making sure to push the stick into the side of the tube at least 5 times. Squeeze the tube with your fingers where arrows show. Break the swab as shown and close the cap on the tube. Use caution as to not contaminate the swab stick during process of inserting into tube.</p>		<p>Step 7 Open the dropper nozzle and add 5 drops of the sample onto the test device. Close cap on the tube and dispose. Disinfect buffer bottle with disinfectant wipes. Perform hand hygiene. Reapply mask/respirator, or apply new mask if the other mask is soiled, damaged, wet or if you are applying a new respirator. Start a 15 minute timer and wait for the result.</p>		<p>Step 8 Check results after 15 minutes. Dispose of test device. Perform hand hygiene. Note: Results must be read within 20 minutes</p>

Two lines = positive result. One line at the C mark - negative result

A test is invalid if there are no lines at all, or if the red line is at the T and there is no red line at the C. The individual should re-do the test. Individuals who receive a second invalid test result should notify their supervisor immediately and follow their instruction.

Rapid Testing Results Pathways



Additional Resources

For manual instructions from Abbott, visit:



Watch the YouTube video Panbio™ COVID 19 Ag Nasal Swab Procedure Live Action:

